

IR3 ALUMINUM HAZARDOUS LOCATION CLASS 1 DIV 2 LED Fixture

IR3-4-2-LED-DR-UNV (80- total watts) HAZARDOUS LOCATION FIXTURE
IR3-4-3-LED-DR-UNV (120 - total watts) HAZARDOUD LOCATION FIXTURE



FIXTURE FEATURES

Intended Use

Intended for hazardous location applications:

- Class I, Div. 2-Groups A, B, C, D

Typical applications include solvent and cleaning areas, petrochemical facilities, marine facilities, waste treatment plants and food processing applications. Daylight Color Temp.

Construction

- Extruded aluminum housing and clear lens.
- End mounting brackets are standard with fixture.

Driver/ Watts / Lumens

Energy efficient, 120-277 multi-volt, electronic, automatic starting drivers are standard in all fixtures. 40 watt LED Strips / Fixture. 5,000 lumens per strip. Cold start below -20 F. 100,000 hour lifespan.

Listings

UL 595 – Outdoor Marine Type (salt water)
UL 844 / C-UL– Class I, Div 2, A,B,C,D
Meets Coast Guard Specifications

Approximate Fixture Dimensions & Weights

Length: 49.75-inches
Width: 6.5-inches
Height (to top of fixture) 6.5-inches
Height (to top of mounting brackets) 11.75-inches
Weight: 33 lbs

Mounting

Fixture can be surface mounted with swivel brackets or suspended.

Warranty

Fixture is warranted for five years from delivery date against manufacturing defects. Made in the USA.

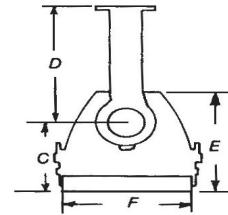
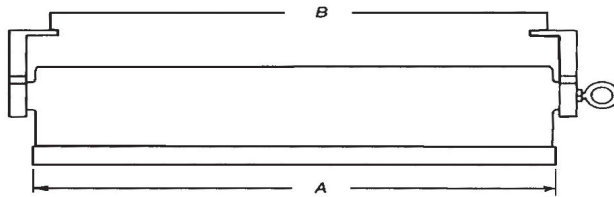
Accessories

- Wire Guard
 - Safety Cable
 - Shock Mount
- Emergency Backup Options Available

IR3 ALUMINUM HAZARDOUS LOCATION CLASS 1 DIV 2 LED Fixture

IR3-4-2-LED-DR-UNV and IR3-4-3-LED-DR-UNV DIMENSIONS

- A- 49 ¾ "
- B- 47 "
- C- 4 ¾ "
- D- 7 "
- E- 6.5 "
- F- 6.5 "



LED ARRAY STRIPS - The Fixture comes equipped with 40 watt LED Strips. 4,400 Lumens per strip. 100,000 Hours Lifespan. 2 and 3 strip versions available.

